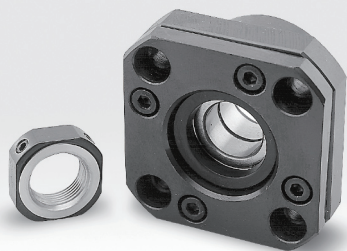
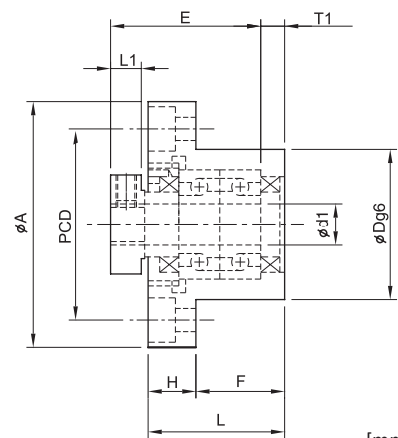
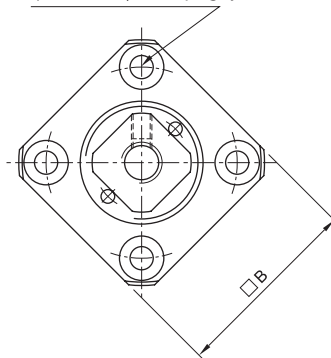
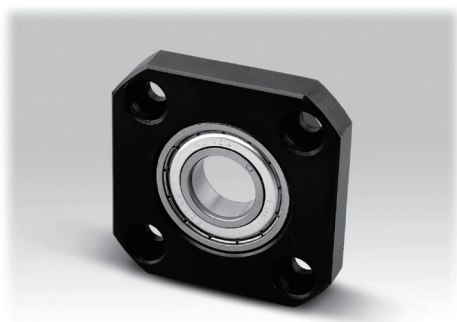
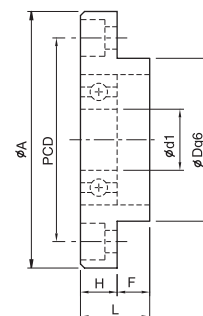
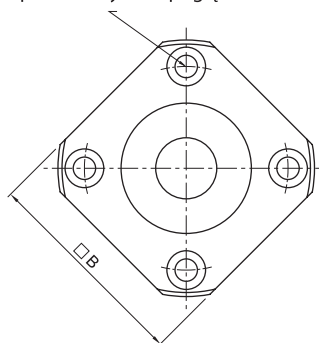


FK strona napędowa

 4x otwór przelotowy $\varnothing Y$ z pogłębieniem Z


[mm]

Model	d1	L	H	F	E	Dg6	A	PCD	B	L1	T1	L2	T2	X	Y	Z	M	T	kg
FK5	5	16.5	6	10.5	18.5	20	34	26	26	5.5	3.5	5	3	3.4	6.5	4	M3	11	0.1
FK6	6	20	7	13	22	22	36	28	28	5.5	3.5	6.5	4.5	3.4	6.5	4	M3	12	0.12
FK8	8	23	9	14	26	28	43	35	35	7	4	8	5	3.4	6.5	4	M3	14	0.16
FK10	10	27	10	17	29.5	34	52	42	42	7.5	5	8.5	6	4.5	8	4	M3	16	0.25
FK12	12	27	10	17	29.5	36	54	44	44	7.5	5	8.5	6	4.5	8	4	M4	19	0.26
FK15	15	32	15	17	36	40	63	50	52	10	6	12	8	5.5	9.5	6	M4	22	0.4
FK17	17	45	22	23	47	50	77	62	61	11	9	14	12	6.6	11	10	M4	24	0.85
FK20	20	52	22	30	50	57	85	70	68	8	10	12	14	6.6	11	10	M4	30	1.2
FK25	25	57	27	30	60	63	98	80	79	13	10	20	17	9	15	13	M5	35	1.6
FK30	30	62	30	32	61	75	117	95	93	11	12	17	18	11	17.5	15	M6	40	2.38

FF strona podparcia

 4x otwór przelotowy $\varnothing Y$ z pogłębieniem Z


[mm]

Model	d1	L	H	F	Dg6	A	PCD	B	X	Y	Z
FF10	8	12	7	5	28	43	35	35	3.4	6.5	4
FF12	10	15	7	8	34	52	42	42	4.5	8	4
FF15	15	17	9	8	40	63	50	52	5.5	9.5	5.5
FF17	17	20	11	9	50	77	62	61	6.6	11	6.5
FF20	20	20	11	9	57	85	70	68	6.6	11	6.5
FF25	25	24	14	10	63	98	80	79	9	14	8.5
FF30	30	27	18	9	75	117	95	93	11	17.5	11