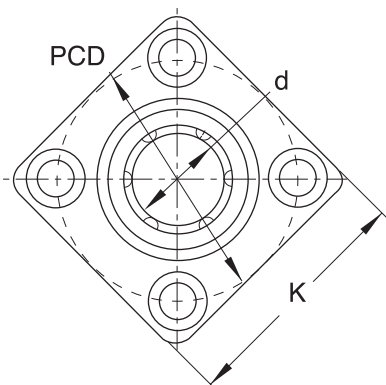
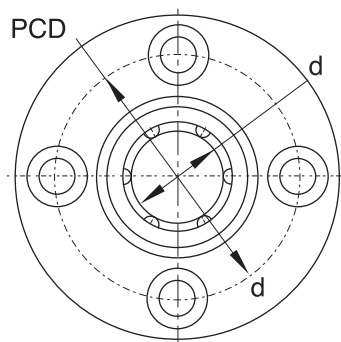
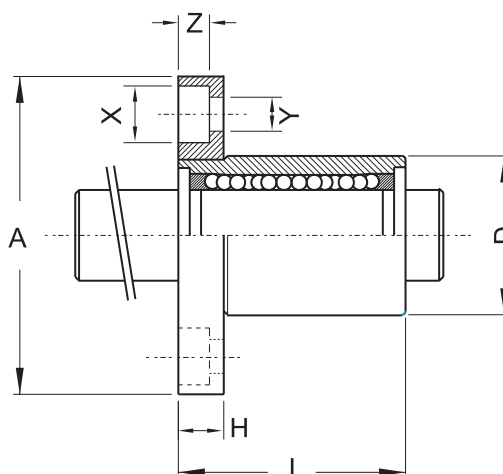


Typ z kołnierzem


Typ : K



Typ : F



[mm]

Model	Podstawowe wymiary												Nośność (kgf)		Waga(g)
	d	D	Tolerancja	L	Tolerancja	K	A	X	Y	Z	h	PCD	Ca	Coa	
LMK6UU	6	12	0-0.011	19	0-0.2	22	28	6	3.5	3.1	5	20	21	27	24
LMF6UU						-									
LMK8UU	8	15		24		25	32	6	3.5	3.1	5	24	28	40	37
LMF8UU						-									
LMK10UU	10	19	0-0.013	29	0-0.2	30	40	7.5	4.5	4.1	6	29	38	56	72
LMF10UU						-									
LMK12UU	12	21		30		32	42	7.5	4.5	4.1	6	32	52	61	76
LMF12UU						-									
LMK13UU	13	23		32		37	48	7.5	4.5	4.1	6	33	52	80	88
LMF13UU															
LMK16UU	16	28	37	42	54	9	5.5	5.1	8	43	90	140	180		
LMF16UU														-	
LMK20UU	20	32	0-0.019	42	0-0.3	42	54	9	5.5	5.1	8	43	90	140	180
LMF20UU						-									
LMK25UU	25	40		59		50	62	9	5.5	5.1	8	51	100	160	340
LMF25UU						-									
LMK30UU	30	45		64		58	74	11	6.6	6.1	10	60	160	280	470
LMF30UU						-									
LMK35UU	35	52	70	80	96	14	9	8.1	13	78	220	410	1060		
LMF35UU														-	
LMK40UU	40	60	0-0.022	80	0-0.3	75	96	14	9	8.1	13	78	220	410	1060
LMF40UU						-									
LMK50UU	50	80		100		92	116	14	9	8.1	13	98	390	810	2200
LMF50UU						-									
LMK60UU	60	90		110		106	134	17	11	11.1	18	112	480	1020	3000
LMF60UU						-									

UU - z uszczelnieniami na zakończeniach