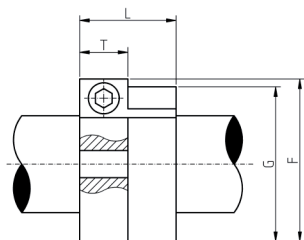
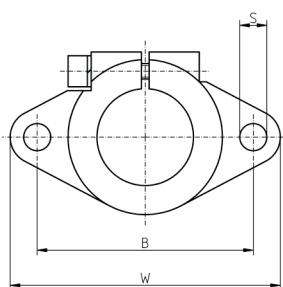
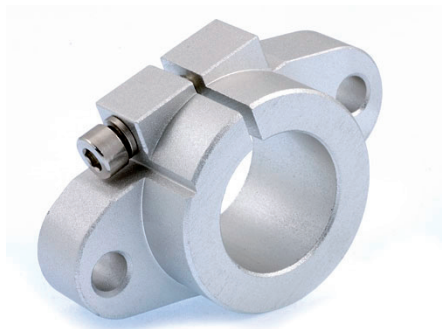
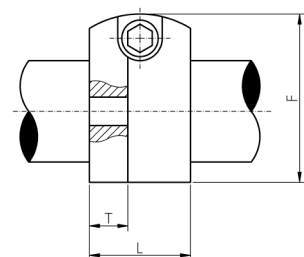
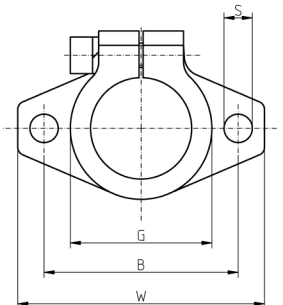


## Wspornik końcowy wałka SHF



Dla modeli SHF10 - SHF40



Dla modeli SHF50 - SHF60

Model	Pod wałek	Wymiary							Zacisk	Waga [kg]
		W	L	T	F	G	B	S		
SHF10	10	43	10	7	24	20	32	5,5 (M5)	M4	0,013
SHF12	12	47	13	7,5	28	25	36	5,5 (M5)	M4	0,02
SHF16	16	50	16	8,5	31	28	40	5,5 (M5)	M4	0,027
SHF20	20	60	20	10,5	37	34	48	7 (M6)	M5	0,04
SHF25	25	70	25	12,5	42	40	56	7 (M6)	M5	0,06
SHF30	30	80	30	12,5	50	46	64	9 (M8)	M6	0,11
SHF35	35	92	35	14,5	58	50	72	12 (M10)	M8	0,157
SHF40	40	106	40	16,5	67	56	80	12 (M10)	M10	0,205
SHF50	50	122	50	19	83	70	96	14 (M12)	M12	0,36
SHF60	60	140	60	23	95	82	112	14 (M12)	M12	0,53