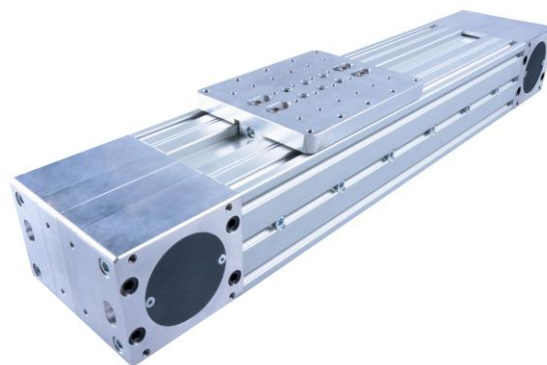


## MLA2P Linear module

**P.P.H. WObit E.K.J Ober. s.c.**  
62-045 Pniewy, Dęborzyce 16  
tel. 61 22 27 422, fax. 61 22 27 439  
e-mail: wobit@wobit.com.pl

The **MLA2P linear module** design is based on reinforced aluminum profile and linear guide.

Mentioned above parameters depends on drives, in which customer is selecting. To achieve optimal operation parameters, WObit recommends use of selected stepper motors or servo motors. For each kind of motors, parameters will differ.



### Features:

- Rigid design
- For higher loads
- Driven using toothed belt
- Increased protection against dust
- Option of encoder mounting
- Compact design
- Can be altered to customer's requirements

### Parameters of belt drive module (MLA2P) without calculation of used motor influence

Max linear thrust	up to 500 N
Max load of the block	up to 100 kg*
Max linear speed	up to 1 m/s
Positioning accuracy	0,1 mm
Drive ratio	1 r./160 mm
Max effective operating range	2800 mm

*\*) Maximal load of a Block for module at vertical arrangement.  
Please pay special attention to existing torsional moments.*

Exemplary order number: **MLA2P-2800-5HP5S2-E**

ML	A	2P	2800	-	5	H	P5	S2	-	E
Linear module	Profile	Type of module	Effective operating range		Pitch surface of cogwheel	Type of linear guide	Gear ratio	Motor type		Encoder
Allowable options	<b>A:</b> 70x40 mm	<b>2P:</b> double module	2800 mm	-	<b>5:</b> T5	<b>H:</b> high	<b>PY</b> <b>1-512</b>	<b>SX/KX</b> Servo motor (SX) or stepper motor (KX)	-	<b>E:</b> encoder

X – means proper motor type, Y – means gear ratio



Technical outline of MLA2P:

