

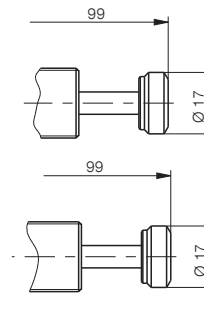
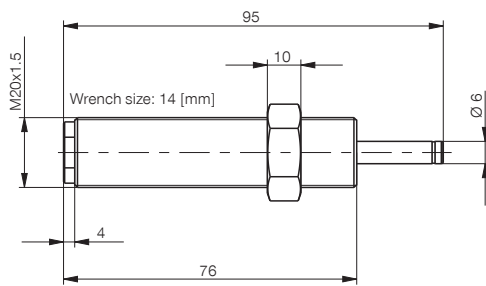
INDUSTRIAL SHOCK ABSORBER

SIZE M20X1.5



PowerStop®

- ▶ **Angle of Impact max.** 2 [°]
- ▶ **Weight with locknut** 120 [g]
- ▶ **Piston return time** 0.3 [s]
- ▶ **Min. return force** 15 [N]
- ▶ **Max. return force** 30 [N]
- ▶ **Permitted temperature range** -10 ... +70 [°C]

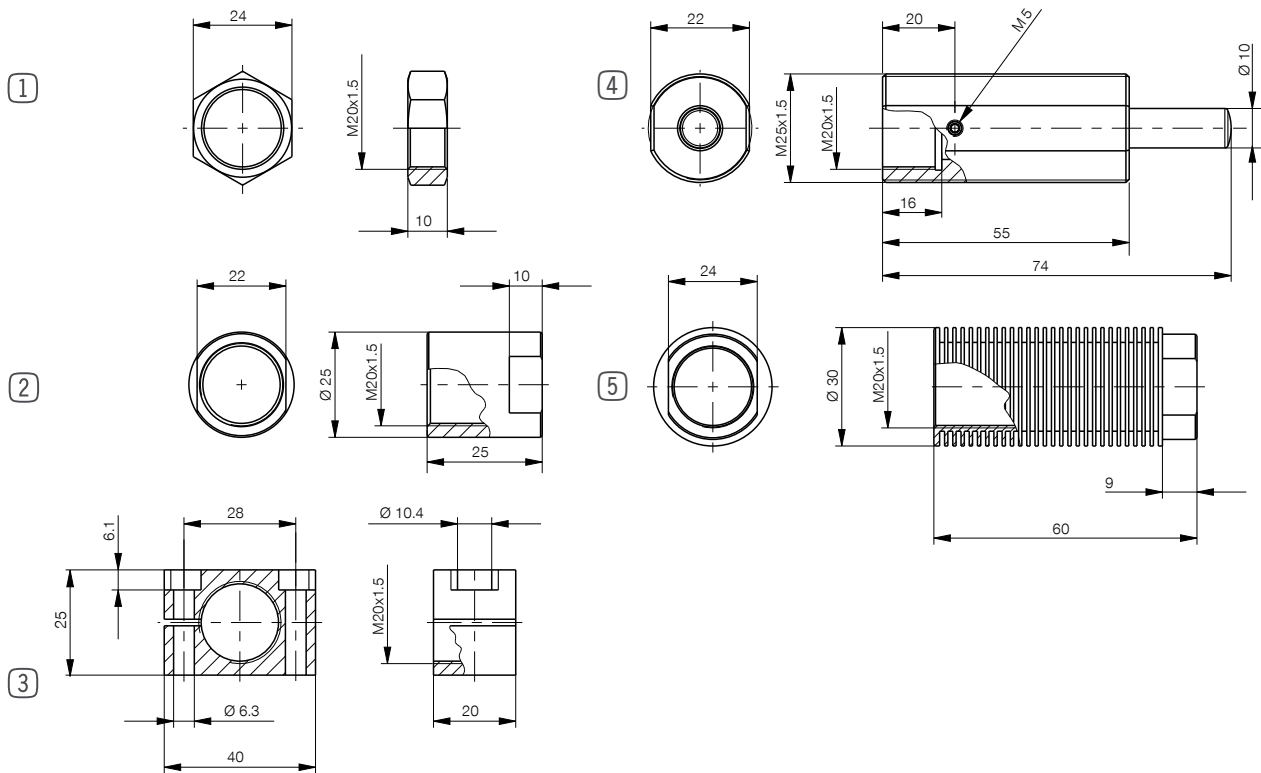


S: assembled with steel head

K: assembled with plastic head

	▶ Technical data						
	Max. energy absorption		Stroke	Impact speed			
	Continuous operation	Emergency stop operation		min.	max.		
Order No.	per stroke [Nm]	per hour [Nm/h]	per stroke [Nm]	[mm]	[m/s]		
HIGH ENERGY	M20X1.5W	35	40,000	-	15	1.8	4
	M20X1.5WS	35	40,000	-	15	1.8	4
	M20X1.5WK	35	40,000	-	15	1.8	4
	M20X1.5S	70	70,000	100	15	1.8	3.5
	M20X1.5SS	70	70,000	100	15	1.8	3.5
	M20X1.5SK	70	70,000	100	15	1.8	3.5
	M20X1.5M	80	80,000	120	15	0.8	2.2
	M20X1.5MS	80	80,000	120	15	0.8	2.2
	M20X1.5MK	80	80,000	120	15	0.8	2.2
	M20X1.5H	80	80,000	150	15	0.2	1.2
	M20X1.5HS	80	80,000	150	15	0.2	1.2
	M20X1.5HK	80	80,000	150	15	0.2	1.2

	▶ Technical data						
	Max. energy absorption		Stroke	Impact speed			
	Continuous operation	Emergency stop operation		min.	max.		
Order No.	per stroke [Nm]	per hour [Nm/h]	per stroke [Nm]	[mm]	[m/s]		
STANDARD ENERGY	M20X1.5RS	32	40,000	-	15	1.8	3.5
	M20X1.5RSS	32	40,000	-	15	1.8	3.5
	M20X1.5RSK	32	40,000	-	15	1.8	3.5
	M20X1.5RM	32	40,000	-	15	0.8	2.2
	M20X1.5RMS	32	40,000	-	15	0.8	2.2
	M20X1.5RMK	32	40,000	-	15	0.8	2.2
	M20X1.5RH	32	40,000	-	15	0.2	1.2
	M20X1.5RHS	32	40,000	-	15	0.2	1.2
	M20X1.5RHK	32	40,000	-	15	0.2	1.2



► Size: **M20X1.5**

Pos.	Accessories	Weight	Order no.
①	Steel locknut	18 [g]	MSM20x1.5
①	Stainless steel locknut	18 [g]	MVM20X1.5
②	Stop sleeve*	60 [g]	MAH20X1.5
③	Clamping flange	110 [g]	MKF20X1.5
④	Side load adapter / air barrier adapter	160 [g]	MRA20X1.5
⑤	Cooling nut	45 [g]	MKM20X1.5

Maximum fastening torque of locknut: 50 [Nm]

*inclusive Stainless-Steel locknut MVM