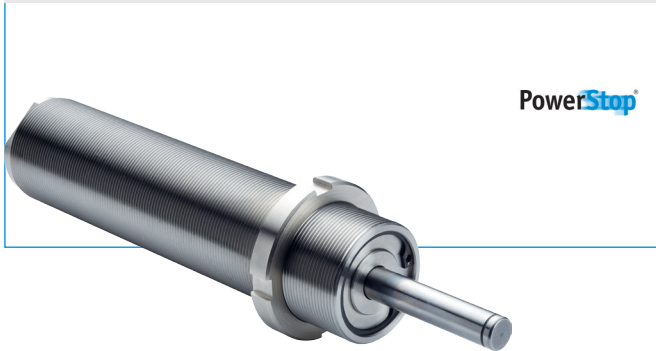


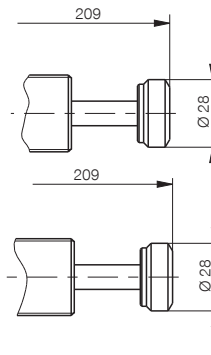
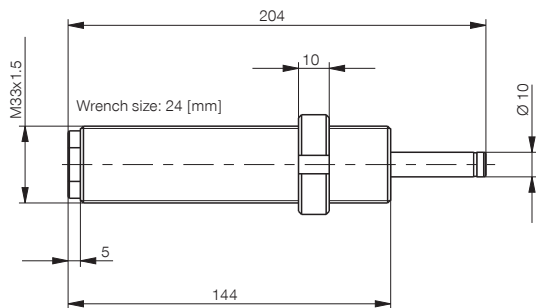
# INDUSTRIAL SHOCK ABSORBER

## SIZE M33X1.5L



PowerStop®

- ▶ **Angle of Impact max.** 2 [°]
- ▶ **Weight with locknut** 700 [g]
- ▶ **Piston return time** 0.8 [s]
- ▶ **Min. return force** 30 [N]
- ▶ **Max. return force** 55 [N]
- ▶ **Permitted temperature range** -10 ... +70 [°C]



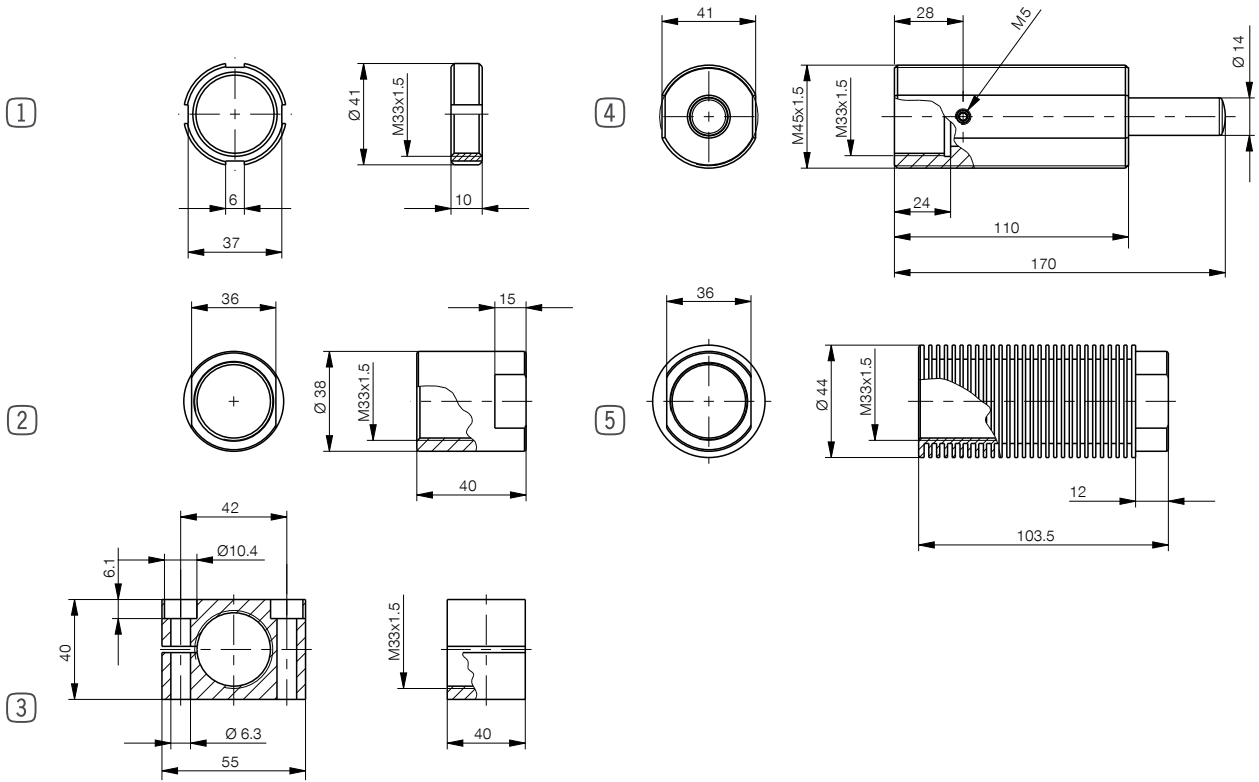
S: assembled with steel head

K: assembled with plastic head

### ▶ Technical data

Order No.	Max. energy absorption			Stroke	Impact speed	
	Continuous operation		Emergency stop operation		min.	max.
	per stroke	per hour	per stroke	[mm]		
<b>M33X1.5LS</b>	450 [Nm]	170,000 [Nm/h]	1100 [Nm]	50	1.8	3.5
<b>M33X1.5LSS</b>	450	170,000	1100	50	1.8	3.5
<b>M33X1.5LSK</b>	450	170,000	1100	50	1.8	3.5
<b>M33X1.5LM</b>	500	180,000	1200	50	0.8	2.2
<b>M33X1.5LMS</b>	500	180,000	1200	50	0.8	2.2
<b>M33X1.5LMK</b>	500	180,000	1200	50	0.8	2.2

HIGH ENERGY



► Size: **M33X1.5L**

Pos.	Accessories	Weight	Order no.
①	Steel locknut	32 [g]	<b>MSM33X1.5</b>
①	Stainless steel locknut	32 [g]	<b>MVM33X1.5</b>
②	Stop sleeve*	150 [g]	<b>MAH33X1.5</b>
③	Clamping flange	450 [g]	<b>MKF33X1.5</b>
④	Side load adapter / air barrier adapter	1100 [g]	<b>MRA33X1.5L</b>
⑤	Cooling nut	140 [g]	<b>MKM33X1.5</b>

Maximum fastening torque of locknut: 80 [Nm]

\*inclusive Stainless-Steel locknut MVM