

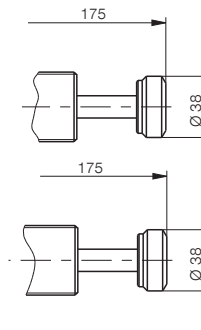
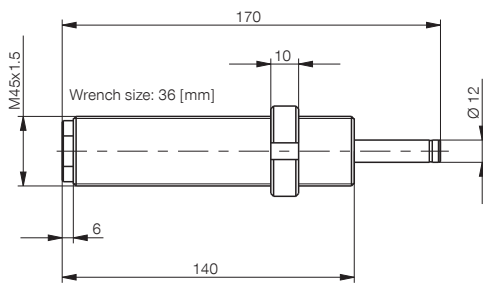
INDUSTRIAL SHOCK ABSORBER

SIZE M45X1.5



PowerStop®

- ▶ **Angle of Impact max.** 2 [°]
- ▶ **Weight with locknut** 1230 [g]
- ▶ **Piston return time** 0.4 [s]
- ▶ **Min. return force** 30 [N]
- ▶ **Max. return force** 60 [N]
- ▶ **Permitted temperature range** -10 ... +70 [°C]



S: assembled with steel head

K: assembled with plastic head

▶ Technical data

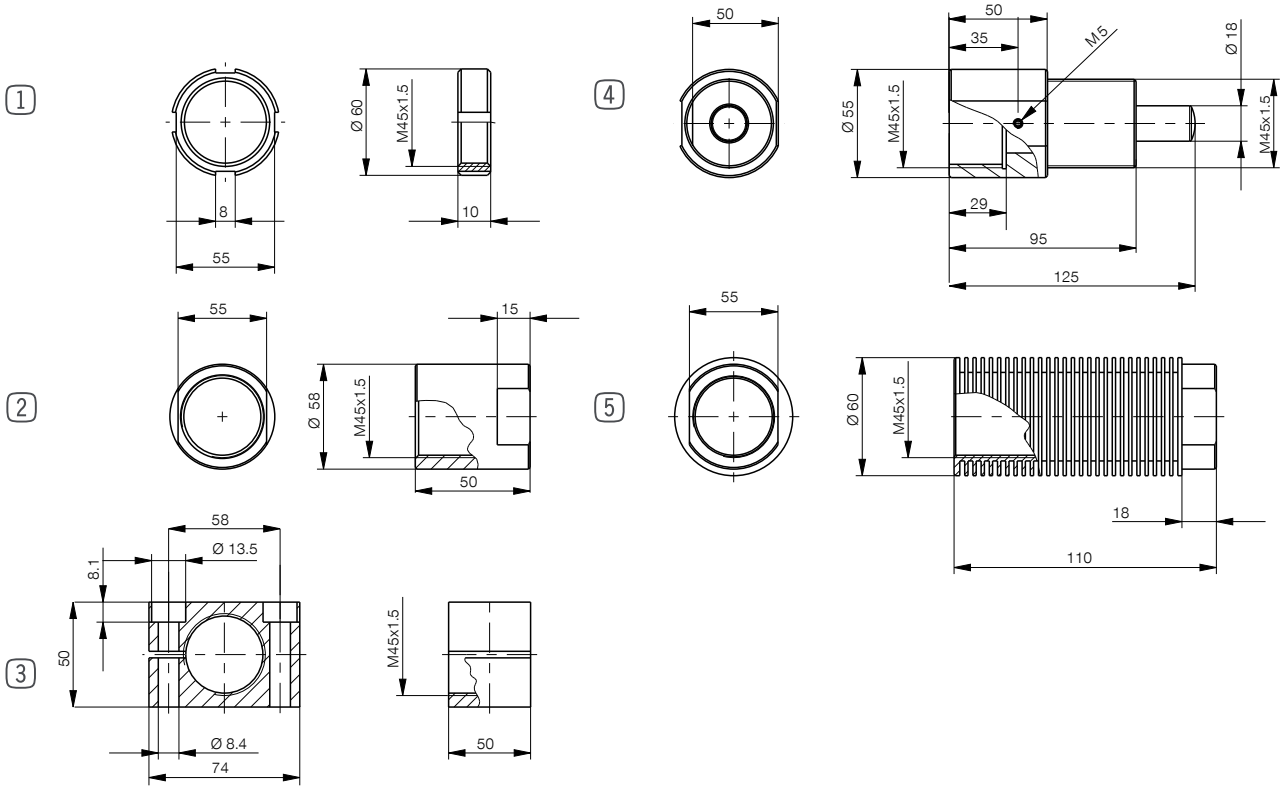
Order No.	Max. energy absorption		Stroke	Impact speed		
	Continuous operation			Emergency stop operation		
	per stroke	per hour	per stroke	min.	max.	
M45X1.5S	600 [Nm]	150,000 [Nm/h]	1400 [Nm]	25 [mm]	1.8 [m/s]	3.5 [m/s]
M45X1.5SS	600	150,000	1400	25	1.8	3.5
M45X1.5SK	600	150,000	1400	25	1.8	3.5
M45X1.5M	650	170,000	1500	25	0.8	2.2
M45X1.5MS	650	170,000	1500	25	0.8	2.2
M45X1.5MK	650	170,000	1500	25	0.8	2.2
M45X1.5H	650	170,000	1600	25	0.2	1.2
M45X1.5HS	650	170,000	1600	25	0.2	1.2
M45X1.5HK	650	170,000	1600	25	0.2	1.2

▶ Technical data

Order No.	Max. energy absorption		Stroke	Impact speed		
	Continuous operation			Emergency stop operation		
	per stroke	per hour	per stroke	min.	max.	
M45X1.5RS	350 [Nm]	140,000 [Nm/h]	- [Nm]	25 [mm]	1.8 [m/s]	3.5 [m/s]
M45X1.5RSS	350	140,000	-	25	1.8	3.5
M45X1.5RSK	350	140,000	-	25	1.8	3.5
M45X1.5RM	350	140,000	-	25	0.8	2.2
M45X1.5RMS	350	140,000	-	25	0.8	2.2
M45X1.5RMK	350	140,000	-	25	0.8	2.2
M45X1.5RH	350	140,000	-	25	0.2	1.2
M45X1.5RHS	350	140,000	-	25	0.2	1.2
M45X1.5RHK	350	140,000	-	25	0.2	1.2

HIGH ENERGY

STANDARD ENERGY



► Size: **M45X1.5**

Pos.	Accessories	Weight	Order no.
①	Steel locknut	100 [g]	MSM45X1.5
①	Stainless steel locknut	100 [g]	MVM45X1.5
②	Stop sleeve*	200 [g]	MAH45X1.5
③	Clamping flange	870 [g]	MKF45X1.5
④	Side load adapter / air barrier adapter	1100 [g]	MRA45X1.5
⑤	Cooling nut	280 [g]	MKM45X1.5

Maximum fastening torque of locknut: 100 [Nm]

*inclusive Stainless-Steel locknut MVM