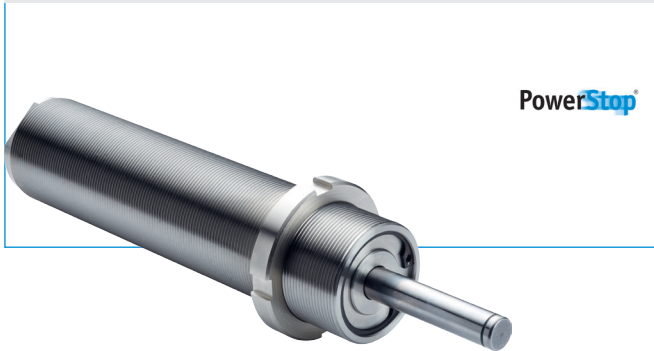


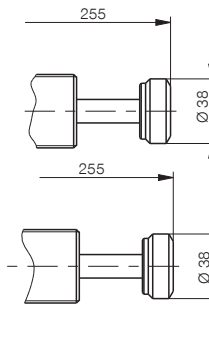
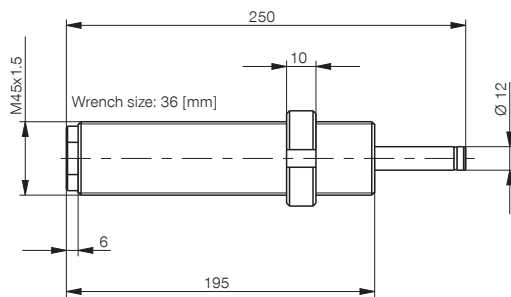
# INDUSTRIAL SHOCK ABSORBER

## SIZE M45X1.5L



PowerStop®

- ▶ **Angle of Impact max.** 2 [°]
- ▶ **Weight with locknut** 1670 [g]
- ▶ **Piston return time** 0.8 [s]
- ▶ **Min. return force** 50 [N]
- ▶ **Max. return force** 130 [N]
- ▶ **Permitted temperature range** -10 ... +70 [°C]



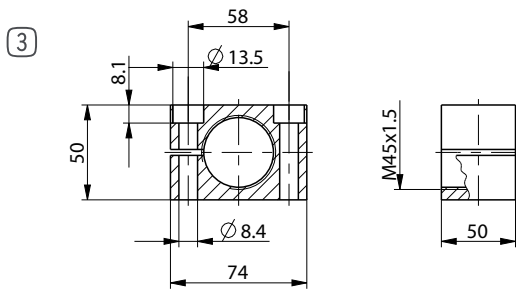
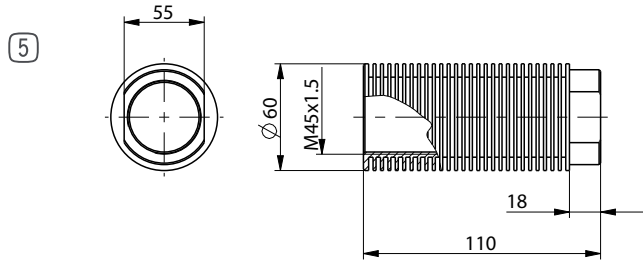
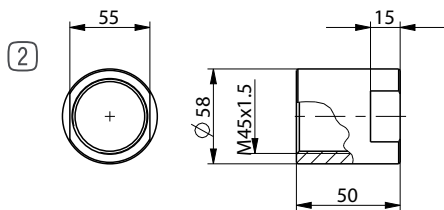
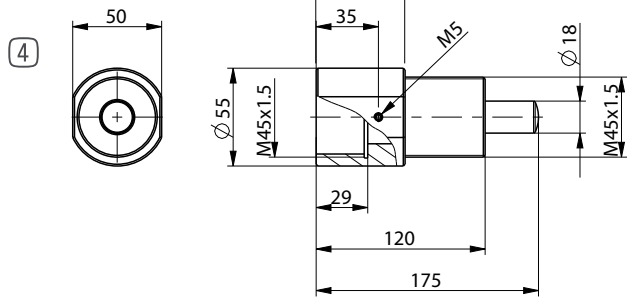
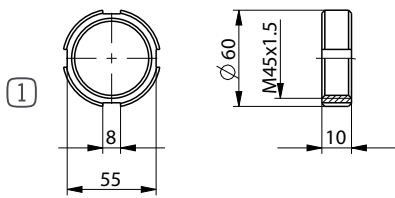
S: assembled with steel head

K: assembled with plastic head

### ▶ Technical data

Order No.	Max. energy absorption			Stroke [mm]	Impact speed	
	Continuous operation		Emergency stop operation per stroke		min.	max.
	per stroke	per hour				
<b>M45X1.5LS</b>	1000 [Nm]	200,000 [Nm/h]	2600 [Nm]	50	1.8	3.5
<b>M45X1.5LSS</b>	1000	200,000	2600	50	1.8	3.5
<b>M45X1.5LSK</b>	1000	200,000	2600	50	1.8	3.5
<b>M45X1.5LM</b>	1200	220,000	2800	50	0.8	2.2
<b>M45X1.5LMS</b>	1200	220,000	2800	50	0.8	2.2
<b>M45X1.5LMK</b>	1200	220,000	2800	50	0.8	2.2

HIGH ENERGY



► Size: **M45X1.5L**

Pos.	Accessories	Weight	Order no.
①	Steel locknut	100 [g]	<b>MSM45X1.5</b>
①	Stainless steel locknut	100 [g]	<b>MVM45X1.5</b>
③	Clamping flange	870 [g]	<b>MKF45X1.5</b>
④	Side load adapter / air barrier adapter	1400 [g]	<b>MRA45X1.5L</b>
⑤	Cooling nut	280 [g]	<b>MKM45X1.5</b>