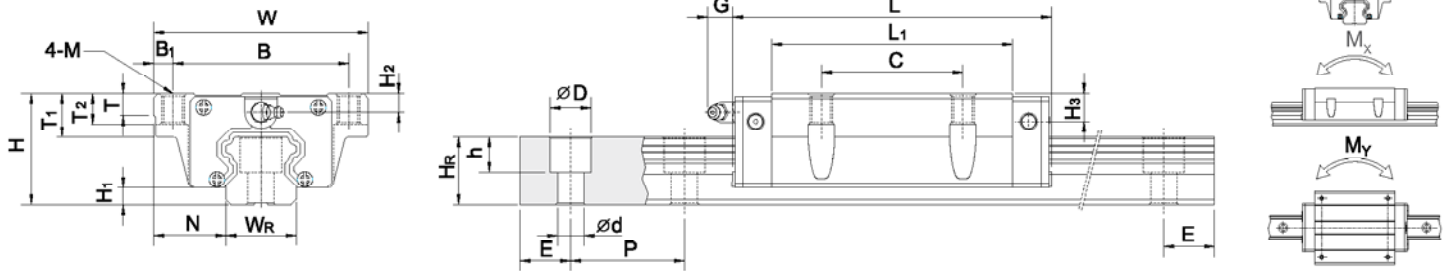


2. HGW-CC / HGW-HC



Szyna: HGR-R

Model	Wymiary montażowe [mm]			Wymiary wózka [mm]										Wymiary szyny profilowej [mm]										Śruby dla szyny [mm]	Nośność dynamiczna C_{dyn} [N]	Nośność statyczna C_0 [N]	Moment statyczny			Waga	
	H	H ₁	N	W	B	B ₁	C	L ₁	L	G	M	T	T ₁	T ₂	H ₂	H ₃	W _R	H _R	D	h	d	P	E				M ₀ [Nm]	M _x [Nm]	M _y [Nm]	Wózek [kg]	Szyna [kg/m]
HGW15CC	24	4.3	16	47	38	4.5	30	39.4	61.4	5.3	M5	6	8.9	6.95	4.5	5.5	15	15	7.5	5.3	4.5	60	*	M4x16	11380	25310	170	150	150	0.17	1.45
HGW20CC HGW20HC	30	4.6	21.5	63	53	5	40	50.5	77.5	12	M6	8	10	9.5	6	7	20	17.5	9.5	8.5	6	60	*	M5x16	17750	37840	380	270	270	0.51	2.21
								65.2	90.3																21180	48840	480	470	470	0.52	
HGW25CC HGW25HC	36	5.5	23.5	70	57	6.5	45	58	83	12	M8	8	14	10	6	9	23	22	11	9	7	60	*	M6x20	26480	56190	640	510	510	0.78	3.21
								78.6	103.6																32750	76000	870	880	880	0.80	
HGW30CC HGW30HC	42	6	31	90	72	9	52	70	97.4	12	M10	8.5	16	10	6.5	10.8	28	26	14	12	9	80	*	M8x25	38740	83060	1060	850	850	1.42	4.47
								93	120.4																47270	110130	1400	1470	1470	1.44	
HGW35CC HGW35HC	48	7.5	33	100	82	9	62	80	112.4	12	M10	10.1	18	13	9	12.6	34	29	14	12	9	80	*	M8x25	49520	102870	1730	1200	1200	2.03	6.3
								105.8	138.2																60210	136310	2290	2080	2080	2.06	
HGW45CC HGW45HC	60	9.5	37.5	120	100	10	80	97	138	12.9	M12	15.1	22	15	8.5	20.5	45	38	20	17	14	105	*	M12x35	77570	155930	3010	2350	2350	3.54	10.41
								128.8	169.8																94560	207120	4000	4070	4070	3.69	
HGW55CC HGW55HC	70	13	43.5	140	116	12	95	117.7	165.7	12.9	M14	17.5	26.5	17	12	19	53	44	23	20	16	120	*	M14x45	114440	227810	5660	4060	4060	5.38	15.08
								155.8	203.8																139350	301260	7490	7010	7010	5.96	
HGW65CC HGW65HC	90	15	53.5	170	142	14	110	144.2	198.2	12.9	M16	25	37.5	23	15	15	63	53	26	22	18	150	*	M16x50	163630	324710	10020	6440	6440	9.17	21.18
								203.6	257.6																208360	457150	14150	11120	11120	12.89	

*patrz str.17, tab.1.19